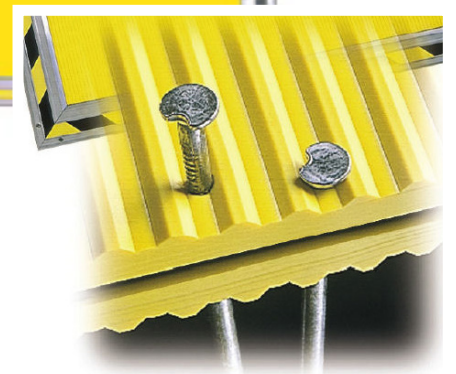
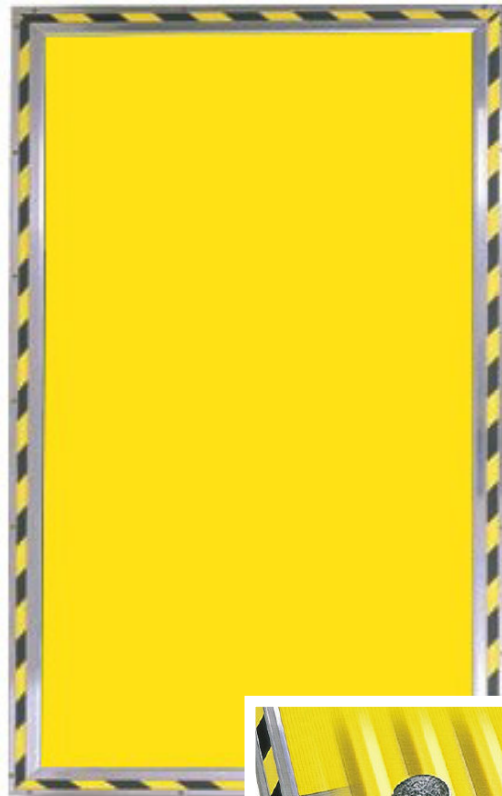


Safety mats

Machine guarding

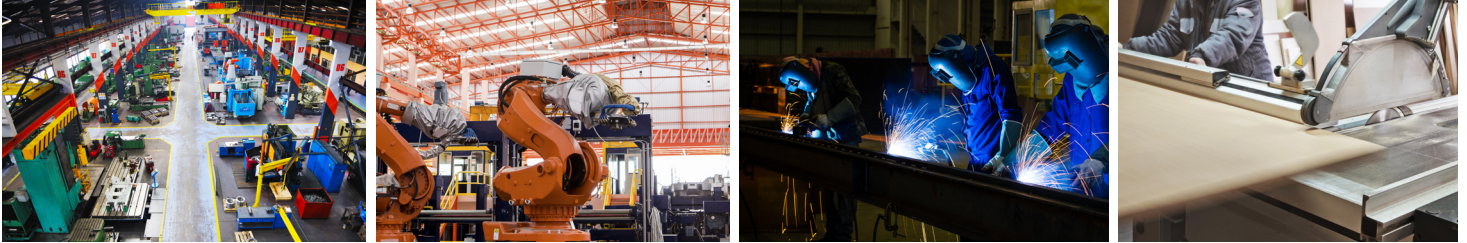


NSD Safety Mat System

Digital "On/Off" System

The NSD Safety Mat System can consist of a failsafe dual channel controller and a tactile mat. This combination provides a compliant solution to Cat 4. The ability to combine multiple mats, allows almost any shape and size area to be monitored. Safety mats are ideal for applications where optical based solutions do not perform well, such as, high dust/swarf areas, steam, smoke and welding arcs. Also being the only mat that can still operate even when punctured, operate on uneven floors and provide reliable solutions in many industrial environments.

HAZARDOUS AREA PRESENCE SENSING DETECTION



EASY ORDER GUIDE

example:	NSD -	36 -	96 -	Y -	R -	X -	20 -	S
	prefix	Width	Length	Colour	Mat Style	Mat Wiring	Wire Length	Options
	NSD	12, 18, 24, 30, 36, 42, 48, 54, 60, 66, 72,	12, 18, 24, 30, 36, 42, 48, 54, 60, 66, 72, 78, 84, 90, 96, 102, 108, 114, 120, 126, 132, 138, 144	Y - Yellow B - Black	R - Rib surface N - Non-Skid surface H - High Temp. Surface (excellent for weld splatter, molten plastic, die casting, forging operations, and wet environments)	X E W P	Order in feet. 20' (6.1m) supplied standard. Specify longer lengths if needed. 100' (30.48m) max.	S - Designates a special cut, contour notch, wire exit or angle in mat (please submit drawing)

Mat Sizes - Inches/Millimeters

Standard Mat Widths (A)	Standard Mat Lengths (B)	
12" / 305mm	12" / 305mm	78" / 1981mm
18" / 457mm	18" / 457mm	84" / 2134mm
24" / 610mm	24" / 609mm	90" / 2286mm
30" / 762mm	30" / 762mm	96" / 2438mm
36" / 914mm	36" / 914mm	102" / 2591mm
42" / 1067mm	42" / 1067mm	108" / 2743mm
48" / 1219mm	48" / 1219mm	114" / 2896mm
54" / 1372mm	54" / 1372mm	120" / 3048mm
60" / 1524mm	60" / 1524mm	126" / 3200mm
66" / 1676mm	66" / 1676mm	132" / 3353mm
72" / 1829mm	72" / 1829mm	138" / 3505mm
		144" / 3658mm

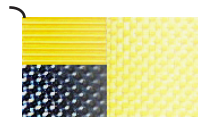
NSD Mat Wiring Options



X - (standard) 2 - 2 conductor wires exiting at centre of mat on B dimension



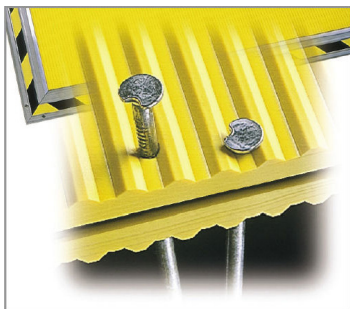
W - 4 conductor cable out of the top left corner (home run wiring to mat controller).



E - 2 - 2 conductor wires exiting at opposite corners on B dimension



P - 4 conductor plug out of the upper left corner; 20' (6m) plug extension supplied standard. Hard-wired to mat controller



NSD vs Steel Electrode Durability Test

Chemical Resistance

The mat housing has excellent resistance to acids, alkalis and salts. Hot acids and alkalis, as well as concentrated oxidizing and organic acids, have deleterious affect over prolonged exposure.

Mat Chemical Resistance

Water	E	Hydrochloric Acid	F to E	Acetic Acid	F	Benzene	P
Ethyl Alcohol	E	Sulfuric Acid	F to E	Gasoline	F	Acetone	P
Sodium Chloride	E	Nitric Acid	F to E	ASTM 1 Oil	F	Trichlorethylene	F to P
Bleach	E						

Key: E=Excellent; F=Fair; P=Poor